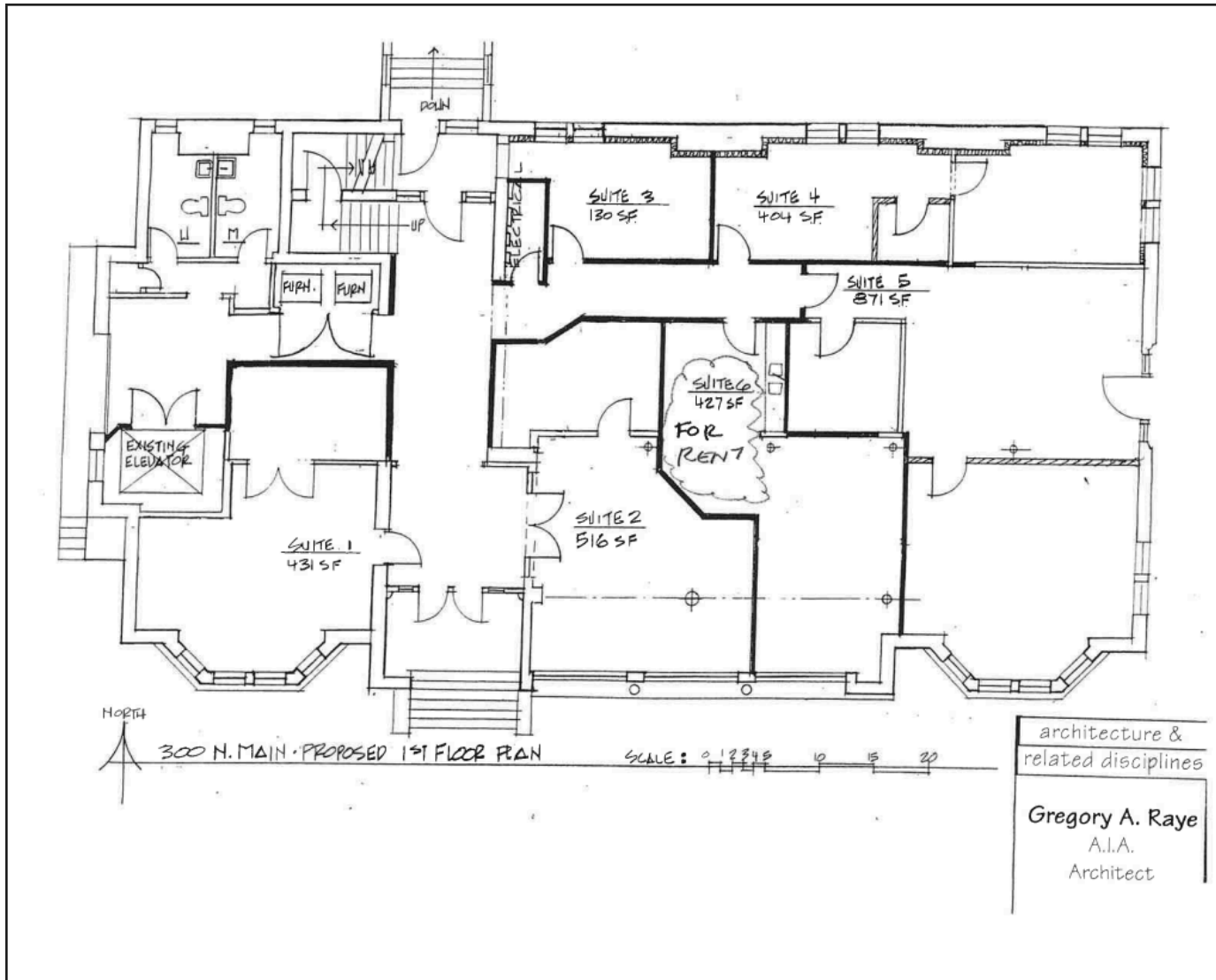
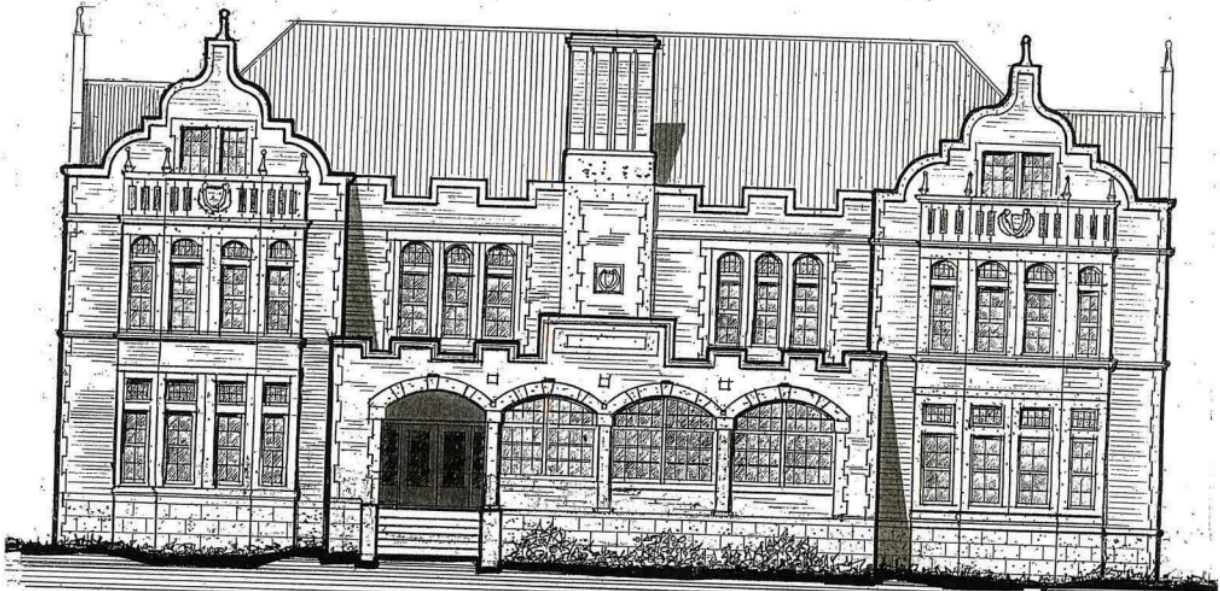


# Office Space for rent at 300 N. Main St, Chelsea.

Office Space in suite #6 for rent at 300 N. Main St, Chelsea. Available for rent sometime in June. The office is 427 square feet and on the first floor in the Glazier Building. Rent will be \$851 per month, which includes all Heat, A.C. Electric, and common area maintenance costs. Below is a floor plan and front elevation drawing of the building.





300 N. MAIN, CHELSEA

architecture &  
related discipline

Gregory A. Raye  
A.I.A.  
Architect