



For Immediate Release

The Design of JD's Stage Bistro

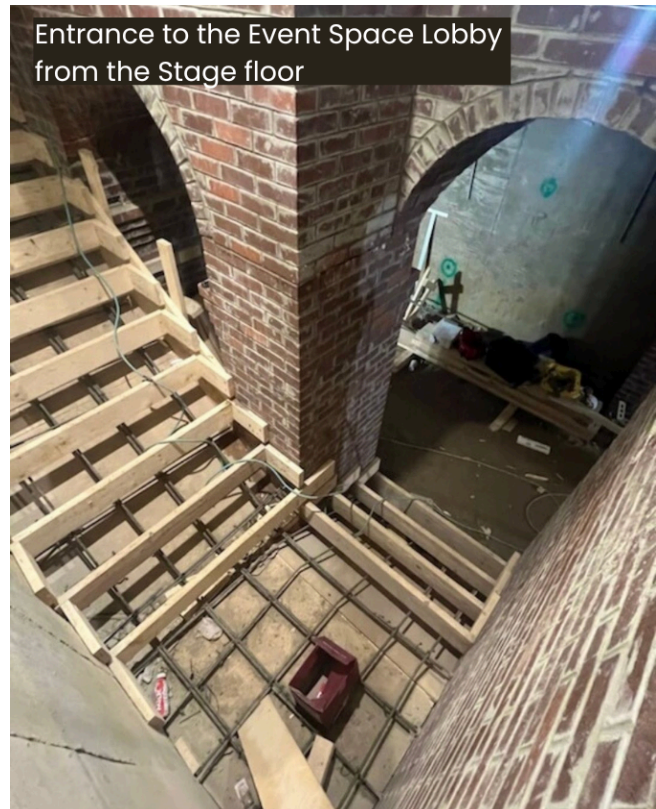
Chelsea, MI — The announcement of JD's Stage Bistro marked the realization of a long-held dream for Tannin Property Group and a significant investment in the future of downtown Chelsea. Today, the team is sharing a deeper look at how that vision is taking shape at 117-½ South Main Street. This update invites the community further into the creative process through the perspective of lead designer **Aaron Vermeulen, AIA.**

"Bringing a twenty-year-old dream to life involves imagination and the careful shaping of physical space. It all started with an old door on Main Street. I pictured a marquee overhead, its exposed bulbs glowing like the theaters of a century ago. I knew it would take an entire team, from a meticulous door maker to a supportive community with a shared vision, to make this project possible.

Partnering with Jeff Daniels, our goal is simple: **evoke old memories to create new ones**, using design that honors Chelsea's past while setting the stage for exceptional music."

The entrance reflects this intention. A handcrafted cherry wood door is inlaid with stained-glass imagery of an olive in a martini glass, a playful symbol of gatherings to come. At the same time, an Art Deco-inspired marquee announces artists and community events, anchoring the new venue to Main Street's historic charm.

"From the moment guests step inside, we want them to feel transported." A shimmering 1920s-style chandelier sets the tone. A staircase leads down to



the stage lobby, where the building opens up into two defining spaces: the stage room and the bistro.

The **stage room** is designed to feel intimate, moody, and cinematic. A corner stage, vintage cocktail bar, and cabaret-style seating create the atmosphere of a classic listening room. Stone walls pay tribute to Chelsea's history, while Edison phonograph horns are repurposed as lighting, a nod to early sound innovation. A hidden green room and additional backstage seating offer memorable experiences for artists and special guests.

The **bistro** is intentionally bright and open, anchored by a custom wood-fired oven and a main kitchen framed by dramatic mahogany doors salvaged from the Waldorf Astoria in New York City, a detail tying world-class hospitality to Chelsea's local charm. Folding glass doors extend the space to a screened-in patio, supported by an ancillary kitchen and three bars designed to serve diners, concertgoers, and private events.



Unique vaulted rooms throughout the venue create opportunities for gatherings of all kinds. The largest, known as **the Newsroom**, features a wine vault, private bar, chandeliers, and adaptive lighting, an ideal backdrop for celebrations or corporate events. Above the vaults and beneath the stage room, utilities have been fully integrated to preserve clean lines and uninterrupted sightlines throughout.



Another distinct space, **Vinyl Lounge**, offers a secluded lounge designed for unfiltered, pure-vinyl listening, a testament to the project's commitment to music in its most authentic form.



Art and storytelling will run through every space. JD's Stage Bistro will showcase a growing collection of Chelsea historical artifacts, music memorabilia, and tributes to Jeff Daniels's career, all woven together to celebrate the town, its people, and its creative spirit.

"What began as an idea behind an old Main Street door is becoming a fully realized experience. Every design decision reflects Chelsea's history, character, and the community we love." —Aaron Vermeulen, AIA.

Media Contact:

doris@dandbmarketing.com

JD's Stage Bistro Contact:

amanda@jdsstagebistro.com

###